

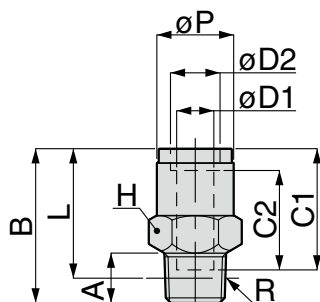
Tube Fitting Brass Series

FITTING

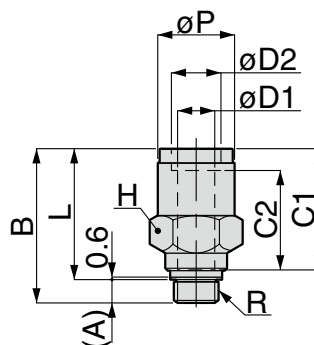
KC Straight

RoHS compliant

OP.
P.754



Taper pipe thread



M5 Thread

Unit : mm

Model code	Tube O.D. $\phi D1$	Tube O.D. $\phi D2$	R	ϕP	B	Tube end C1	Tube end C2	A	L	Hex. H	Orifice dia.	Effective area (mm ²)	Weight (g)	
KC4-M5-□	4	6	M5×0.8	9.8	22.7	17.6	15	2.9	19.8	10	1.8	2	12	
KC4-01-□			R1/8		23.7			8	19.7					
KC4-02-□			R1/4		26.7			11	20.7	14	2.5	4.5	22	
KC6-M5-□	6	8	M5×0.8	11.8	25.5	19.5	16.3	2.9	22.6	12	1.8	2	17	
KC6-01-□			R1/8		25.1			8	21.1					
KC6-02-□			R1/4		29.1			11	23	14	4	11	23	
KC6-03-□			R3/8		29.1			12	22.7	17				34
KC8-01-□	8	10	R1/8	13.8	29.9	20.2	17.2	8	25.9	14	6	20	27	
KC8-02-□			R1/4		28.6			11	22.6					
KC8-03-□			R3/8		28.9			12	22.6	17	32			
KC10-01-□	10	12	R1/8	16.9	33.3	23.2	19.5	8	29.3	17	6	23	40	
KC10-02-□			R1/4					31.8	11					27.3
KC10-03-□			R3/8					31.8	12	25.5	22	8	35	46
KC10-04-□			R1/2					35.8	15	27.6				
KC12-02-□	12	14	R1/4	20	38.9	26.3	22.3	11	32.9	21	8.5	47	61	
KC12-03-□			R3/8		34.9			12	28.6					
KC12-04-□			R1/2		36.9			15	28.7	22	9	50	74	

※ 1. "L" is a reference value for height dimension after tightening taper thread.

※ 2. □ in Model code / Replaced with "N"(NBR), or "F"(FKM) for Seal rubber material change