



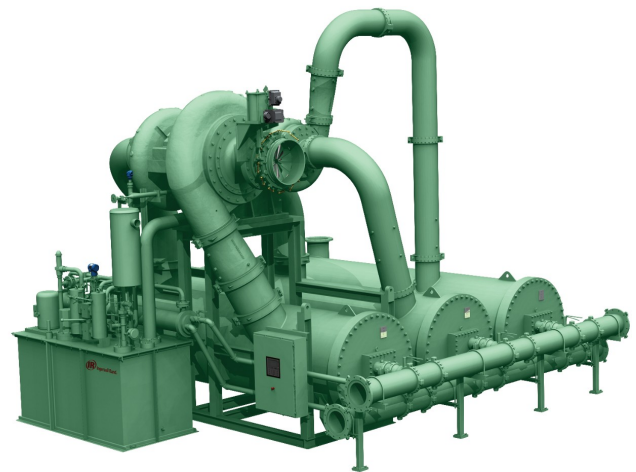
# MSG<sup>®</sup> LMAC 50 Centrifugal Air Compressor

The MSG LMAC is an integrally geared centrifugal compressor that has been optimized for applications in air separation units (ASU) as the main air compressor (MAC). The compressor package is designed for ease of installation, operation and maintenance, and to comply with various design code requirements for global installations. The MSG LMAC is available in three models that have been aerodynamically optimized to serve as the MAC in ASUs producing 150 to 400 tons of oxygen per day (TPD).

## Features

### AIR SEPARATION PROCESS

The volumetric composition of dry atmospheric air is ~78% nitrogen and ~21% oxygen, with the remaining ~1% being made of argon, carbon dioxide and trace amounts of other gases. These gases can be separated in an air separation process where the air is compressed, cooled and separated by molecular weight in a cold box. Once separated, the gases are again compressed for storage, transportation, or further processing. Ingersoll Rand has the technologies and resources to provide the main air compressor (MAC), booster air compressor (BAC), nitrogen gas compressor (GAN), nitrogen recycle compressor (NRC), and argon gas compressors. The MSG LMAC is designed specifically to fulfill the role of the MAC with optimized aerodynamic efficiency. Interstage coolers are implemented after each stage of compression to remove the heat of compression and achieve high isothermal efficiency. The MAC is the heart of the ASU; its efficient and reliable



---

operation is critical to the success and viability of the ASU project.

## **HIGHLY EFFICIENT DESIGN**

MSG LMAC compressors are designed to deliver peak performance throughout the entire compressor operating range and feature:

- Custom, 5-axis milled impellers for process-specific aerodynamic designs
- Inlet Guide Vanes (IGV)
- High-efficiency intercoolers and optional aftercooler

## **ROBUST MECHANICAL DESIGN**

MSG LMAC compressors are designed to withstand the rigors of a long and demanding service life with:

- Tapered rider ring thrust collars to absorb loads at low speed
- Tilting pad radial bearings
- AGMA 13 rated bullgear and pinion gears

## **STANDARDIZED COMPRESSOR PACKAGE**

The highly accessible, standardized design allows for shortened delivery times and ease-of-installation/maintenance by providing:

- Standard engineering drawings
- Package-mounted intercoolers and terminal box/MAESTRO Universal control system
- Horizontally split gearbox
- Side-mounted lubrication console with duplex oil filters standard
- Compressor sub-base

## **ADDITIONAL APPLICATIONS**

In addition to air separation, the MSG LMAC can be deployed for efficient, reliable service in several other applications, including:

- Aerospace
- Automotive
- Electronics
- Fertilizer
- Glass
- Life Sciences
- Mining
- Petrochemical
- Pharmaceuticals
- Power Generation
- Steel

## Model Specifications

Specification	Metric	Imperial
Standard Input Power	up to 11,185 kW	up to 15,000 hp
Discharge Pressure	up to 9.5 barg	up to 140 psig
Inlet Flow	833 to 1500 m <sup>3</sup> /min	29,500 to 53,000 CFM

## Parts & Accessories



**MSG® Centrifugal Compressor Replacement Parts**



**Centrifugal Oil Filters**



**MAESTRO Universal Centrifugal Compressor Control System**



**Field Overhaul Services**



Ingersoll Rand (NYSE:IR) advances the quality of life by creating comfortable, sustainable and efficient environments. Our people and our family of brands—including Club Car®, Ingersoll Rand®, Thermo King® and Trane®—work together to enhance the quality and comfort of air in homes and buildings; transport and protect food and perishables; and increase industrial productivity and efficiency. We are a \$14 billion global business committed to a world of sustainable progress and enduring results. For more information, visit [www.ingersollrand.com](http://www.ingersollrand.com).