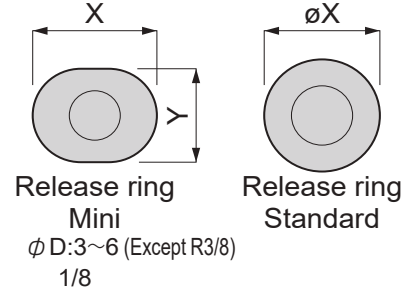
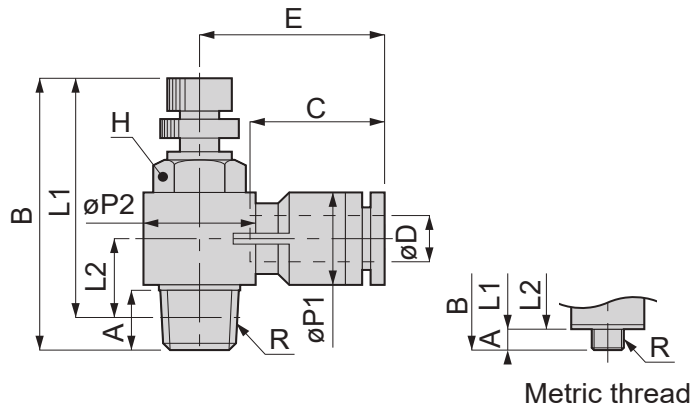


Metric thread

JSC Elbow/Banjo

RoHS compliant



Unit : mm

Model code	Tube O.D øD	R	A	B		L1		L2	øP1	øP2	Tube end C	E	Hex.	X (øX)	Y	Weight (g)	CAD file name							
				max.	min.	max.	min.																	
JSC3-M3④⑤⑥	3	M3×0.5	2.5 [2.2]	29.2	26.5	26.7 [27]	24 [24.3]	6.6 [6.9]	8	9.8	11	15.4	8	9.8	7.8	6.6	JSC3-M3_④⑤⑥_C							
JSC3-M5④⑤⑥		M5×0.8	2.9 [3.2]	29.7	27	26.8 [26.5]	24.1 [23.8]	6.7 [6.4]								7.3	JSC3-M5_④⑤⑥_C							
JSC4-M3④⑤⑥	4	M3×0.5	2.5 [2.2]	29.2	26.5	26.7 [27]	24 [24.3]	6.6 [6.9]	8	9.8	11	15.4	8	9.8	7.8	6.6	JSC4-M3_④⑤⑥_C							
JSC4-M5④⑤⑥		M5×0.8	2.9 [3.2]	29.7	27	26.8 [26.5]	24.1 [23.8]	6.7 [6.4]								7.2	JSC4-M5_④⑤⑥_C							
JSC4-01④⑤⑥		R1/8	8	41.5	34.9	37.5	30.9	10.7		14.4		17.7	10			17	JSC4-01_④⑤⑥_C							
JSC6-M5④⑤⑥	6	M5×0.8	2.9 [3.2]	29.7	27	26.8 [26.5]	24.1 [23.8]	7.5 [7.2]	10.5	9.8	11.6	17.5	8	11.8	9.8	7.9	JSC6-M5_④⑤⑥_C							
JSC6-01④⑤⑥		R1/8	8	41.5	34.9	37.5	30.9	10.7								14.4	18.3	10	18	JSC6-01_④⑤⑥_C				
JSC6-02④⑤⑥		R1/4	11.1	48.9	42.2	42.8	36.1	11.9								18.4	20.2	14	35	JSC6-02_④⑤⑥_C				
JSC6-03④⑤⑥		R3/8	13.2	54.4	46.9	48	40.5	15.4								14.4	22	17	29	19	—	65	JSC6-03_④⑤⑥_C	
JSC8-01④⑤⑥	8	R1/8	8	41.5	34.9	37.5	30.9	11.9	14.4	14.4	18.1	26.9	10	13.8	—	21	JSC8-01_④⑤⑥_C							
JSC8-02④⑤⑥		R1/4	11.1	48.9	42.2	42.8	36.1	13.2								18.4	28.4	14	38	JSC8-02_④⑤⑥_C				
JSC8-03④⑤⑥		R3/8	13.2	54.4	46.9	48	40.5	15.4								22	28.9	19	65	JSC8-03_④⑤⑥_C				
JSC8-04④⑤⑥		R1/2	16	59.7	52.4	51.5	44.2	18								28	31	24	101	JSC8-04_④⑤⑥_C				
JSC10-02④⑤⑥	10	R1/4	11.1	48.9	42.2	42.8	36.1	14.8	17.6	18.4	20.2	30.9	14	16.8	—	41	JSC10-02_④⑤⑥_C							
JSC10-03④⑤⑥		R3/8	13.2	54.4	46.9	48	40.5	16.7								22	31.2	19	69	JSC10-03_④⑤⑥_C				
JSC10-04④⑤⑥		R1/2	16	59.7	52.4	51.5	44.2	18								28	33.6	24	104	JSC10-04_④⑤⑥_C				
JSC12-03④⑤⑥	12	R3/8	13.2	54.4	46.9	48	40.5	18.4	21	22	23.4	36.9	19	19.8	—	72	JSC12-03_④⑤⑥_C							
JSC12-04④⑤⑥		R1/2	16	59.7	52.4	51.5	44.2	19.7								28	36.4	24	107	JSC12-04_④⑤⑥_C				
JSC1/8-M3④⑤⑥	1/8"	M3×0.5	2.5 [2.2]	29.2	26.5	26.7 [27]	24 [24.3]	6.6 [6.9]	8	9.8	11	15.4	8	9.8	7.8	6.6	JSC1_8-M3_④⑤⑥_C							
JSC1/8-M5④⑤⑥		M5×0.8	2.9 [3.2]	29.7	27	26.8 [26.5]	24.1 [23.8]	6.7 [6.4]								7.3	JSC1_8-M5_④⑤⑥_C							
JSC1/4-M5④⑤⑥	1/4"	M5×0.8	2.9 [3.2]	29.7	27	26.8 [26.5]	24.1 [23.8]	8.4 [8.1]		9.8		24	8			9.5	JSC1_4-M5_④⑤⑥_C							
JSC1/4-01④⑤⑥		R1/8	8	41.5	34.9	37.5	30.9	10.9								12.4	14.4	17	23.5	10	11.8	—	19	JSC1_4-01_④⑤⑥_C
JSC1/4-02④⑤⑥		R1/4	11.1	48.9	42.2	42.8	36.1	12.2								18.4	25.5	14	36	JSC1_4-02_④⑤⑥_C				
JSC5/16-01④⑤⑥	5/16"	R1/8	8	41.5	34.9	37.5	30.9	11.9		14.4	18.1	26.9	10	13.8	—	21	JSC5_16-01_④⑤⑥_C							
JSC5/16-02④⑤⑥		R1/4	11.1	48.9	42.2	42.8	36.1	13.2								18.4	28.4	14	38	JSC5_16-02_④⑤⑥_C				
JSC5/16-03④⑤⑥		R3/8	13.2	54.4	46.9	48	40.5	15.4								22	28.9	19	65	JSC5_16-03_④⑤⑥_C				
JSC3/8-02④⑤⑥	3/8"	R1/4	11.1	48.9	42.2	42.8	36.1	14.8	17.6	18.4	20.2	30.9	14	16.8	—	41	JSC3_8-02_④⑤⑥_C							
JSC3/8-03④⑤⑥		R3/8	13.2	54.4	46.9	48	40.5	16.7								22	31.2	19	69	JSC3_8-03_④⑤⑥_C				

※ 1. ④ in model code : Replaced with "A" for Meter-out (Exhaust), "B" for Meter-in (Supply) control.

※ 2. ⑤ in Model code / Replaced with "K" for Low cracking pressure type.

(No ⑤ in Model code indicates Low cracking pressure type is not available.)

※ 3. ⑥ in model code : Replaced with "W" for Light-Gray, "-C" for Cleanroom package, and "W-C" for Cleanroom & Light-Gray.

※ 4. "L1" and "L2" are reference values for height dimensions after tightening a taper thread.

※ 5. Value in [] is for cleanroom packaging.