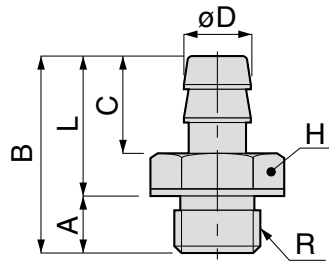
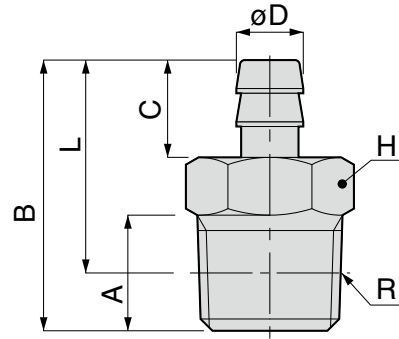


RoHS compliant



Metric thread



Taper pipe thread

Unit : mm

Model code	Tube I.D. øD	R	A	B	L	C	Hex. H	Weight (g)	Orifice dia.	Effective area (mm ²)	CAD file name (※4)
LC-0320-M3□	2	M3 × 0.5	2.5 [2.2]	11	8.5 [8.8]	6	5.5	0.7	1.2	0.9	TFMF-001
LC-0320-M5□		M5 × 0.8	3 [3.2]	11.5	8.5 [8.3]		7	1.5			
LC-0320-01□		R1/8	8	18	14		10	6.9			
LC-0425-M3□	2.5	M3 × 0.5	2.5 [2.2]	12	9.5 [9.8]	7	5.5	0.8	1.2	0.9	TFMF-001
LC-0425-M5□		M5 × 0.8	3 [3.2]	13	10 [9.8]		7	1.5			
LC-0425-M6□		M6 × 1	4	14	10		8	2.5	1.6	1.7	
LC-0425-01□		R1/8	8	19	15		10	1.9			
LC-0535-M5□	3	M5 × 0.8	3 [3.2]	13	10 [9.8]	7	7	1.5	1.8	2	TFMF-001
LC-0640-M3□	4	M3 × 0.5	2.5 [2.2]	12.5	10 [10.3]	7	5.5	1.3	1.2	0.9	
LC-0640-M5□		M5 × 0.8	3 [3.2]	13	10 [9.8]		7	1.5			
LC-0640-M6□		M6 × 1	4	14	10		8	2.5	2.4	3.8	
LC-0640-01□		R1/8	8	19	15		10	7.5			

※ 1. □ in Model code / Replaced with "C" for Clean-room package

※ 2. "L" is a reference value for height dimension after tightening taper thread.

※ 3. Dimensions in [] are for clean-room package products.

※ 4. Visit PISCO website for CAD data of clean-room package products.

※ 5. Be sure to place Tube Clamp Sleeve on the edge of outer tube in order to avoid the escape of tubes.