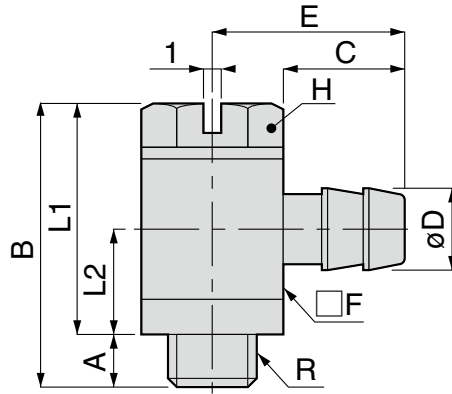


**LH****Barb Single Banjo****CAD**

RoHS compliant



Unit : mm

Model code	Tube I.D. øD	R	A	B	L1	L2	C	E	Hex. H	□F	Weight (g)	Orifice dia.	Effective area (mm <sup>2</sup> )	CAD file name
LH-0320-M3□	2	M3×0.5	2.2	11.5	9.3	4.3	6	8.8	5.5	5.5	1.9	1.0	0.5	—
LH-0320-M5□		M5×0.8	3.2	16	12.8	6		10	7	8	5.5	1.2	0.8	TFMF-001
LH-0425-M3□	2.5	M3×0.5	2.2	11.5	9.3	4.3	7	9.8	5.5	5.5	1.9	1.0	0.5	—
LH-0425-M5□		M5×0.8	3.2	16	12.8	6		11	7	8	5.5	1.6	1.2	TFMF-001
LH-0640-M5□	4	M5×0.8	3.2	16	12.8	6	7	11	7	8	6	1.8	1.5	

※ 1. □ in Model code / Replaced with "C" for Clean-room package

※ 2. Be sure to place Tube Clamp Sleeve on the edge of outer tube in order to avoid the escape of tubes.