

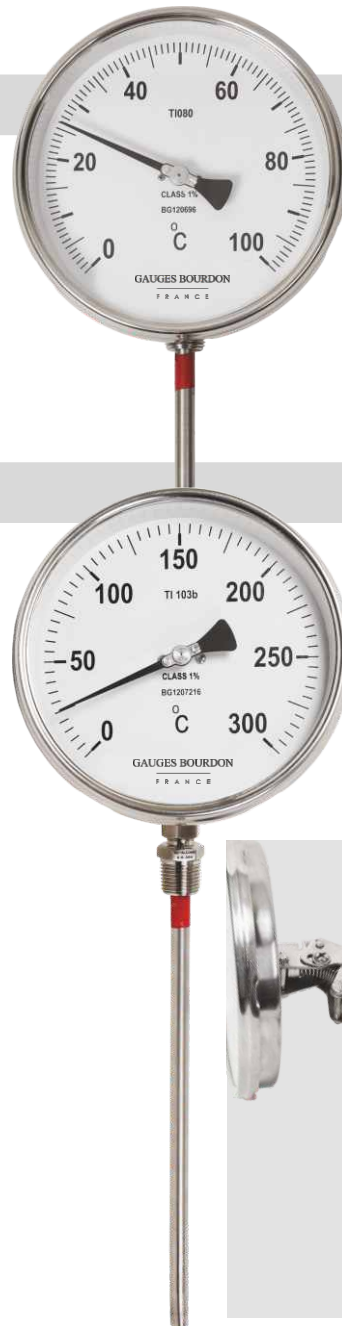
The Bimetal thermometer employs a bimetal strip in the form of helix (it works on the principle of thermal expansion - two metals having different coefficient of expansions are joined to form a bimetal. The resultant expansion of bimetal is proportional to temperature). Bimetal dial thermometers are simple in construction, yet rugged. They are used for measurement of temperature in most of the industrial applications. They are offered in the range of (-) 50°C to 600°C. With rigid stem having bottom or back entry. It can also be offered in every angle rotatable construction.

Features

- Rugged construction
- Bottom/Back entry, every angle construction
- Fast response
- Protection class IP-67
- Accuracy $\pm 1\%$ FSD
- High repeatability, low hysteresis
- Hermetically sealed case

Specifications

Ref. Standard	ASME B 40.200, EN 13190
Dial	100 mm or 150 mm in aluminium white background, black markings
Case	SS304 with bayonet bezel / SS316 optional
Protection	Weatherproof to IP - 67 (IS/IEC : 60947 / IEC : 60529)
Window	Shatterproof glass
Pointer	Aluminium, black, micrometer adjustable
Stem	SS304 or SS316 in 6 mm, 8 mm, 10 mm, 12 mm dia and length from 100 mm to 1000 mm as standard
Connection	1/2" NPT (M) as standard in SS304 or SS316 adjustable three piece compression fitting
Range	(-) 50°C to 600°C with a minimum span of 60°C
Accuracy	$\pm 1\%$ FSD
Over range	125% FSD (upto max temp range of 500°C)
Reset	Micrometer Pointer (standard) External (optional)
Optional	1) Silicon Oil Filled Case (Suitable upto 339°C Max) 2) Contacts: Single SPST, normally open to close on rise / fall in temperature (specify action required) adjustable over the entire range, rating 30 VA @ 230 V AC (100 mm dial, back entry only)
Note	1) For minimum insertion length essential for proper sensing, contact our design department. 2) Three point calibration certificate accompanies each thermometer.



Ordering Information

MODEL : BDT

